
Florida Land Steward Tour: Andrews State Tree Nursery

Levy County, FL



Thursday, November 7, 2024

9:00 to 11:00 AM ET

9850 NW 42nd Ct., Chiefland, FL 32626

The Florida Forest Service produces over 4 million bare-root pine seedlings at its Andrews Nursery located in Chiefland, Florida. These seedlings are available for sale to non-industrial private landowners, corporate landowners, and state and federal agencies to support Florida's reforestation needs.

Andrews Nursery also grows a combined total of over 5 million containerized pine seedlings and containerized wiregrass.



Funding for this event is provided by the Florida Department of Agriculture and Consumer Service's Florida Forest Service, and the Florida Sustainable Forestry Initiative Implementation Committee.

University of Florida IFAS is an Equal Opportunity Institution

Table of Contents	Page
Andrews Nursery Tour Information	
Resource Contacts	3
Ordering Seedlings and Seedling Quality Measurements	4
References and Links	
Planting Southern Pines (includes longleaf pine and genetically improved stock)	5
Assistance and Resources	
Assistance and Recognition Programs for Landowners	6
Florida Women Landowners Association	7
Silviculture Best Management Practices to Protect Water	8
Forestry Wildlife Best Management Practices for State Imperiled Species	9
USDA Natural Resources Conservation Service Assistance Fact Sheets	10
UF/IFAS Stewardship Publications	13
UF/IFAS Forest Landowner Academy	14
Note space	15

Resource Contacts

Jeremy Hardee

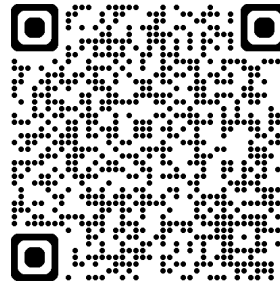
Nursery Manager

Andrews Nursery

Florida Forest Service

(352) 493-6096

Jeremy.Hardee@FDACS.gov

Find your County Forester:**Brian Cobble**

Cooperative Forestry Assistance - Region 2
Coordinator

Florida Forest Service

(352) 727-2985

Brian.Cobble@fdacs.gov

Chris Demers

Extension Program Manager

Florida Land Steward Program

UF/IFAS School of Forest, Fisheries, and
Geomatics Sciences

(352) 846-2375

cdemers@ufl.edu

Information and news about assistance, opportunities, and events can be found at the
Florida Land Steward website: <https://programs.ifas.ufl.edu/florida-land-steward/>

Andrews Nursery

Ordering Seedlings

Andrews Nursery accepts seedling orders beginning the **first week of July** for the upcoming planting season. Orders can be placed online or by mail using a paper order form. However, paper form orders are subject to additional delays due to mail service/processing. It is **recommended that you order online** at <https://www.fdacs.gov/Forest-Wildfire/For-Landowners/Programs-for-Landowners/Tree-Seedlings-for-Sale>



Seedling Quality Measurements

The following table lists the minimum requirements for acceptable pine seedlings. You should evaluate your seedlings before planting. If most of your seedlings meet these requirements, make sure inferior seedlings are culled during planting. **If the majority of your seedlings do not meet these minimums, immediately notify the nursery.** Do not plant the trees.

Minimum Quality Measures for Pine Seedlings

	Loblolly, Slash, and Sand Pines	Longleaf Pine
Stem Length	6 inches	8 inches (needle length)
Root Collar Diameter	1/8 inch	3/8 inch
Lateral Roots	Abundant	Abundant
Winter Buds	N/A	Present
Mycorrhizae	Present	Present

Also watch out for these **signs of deterioration**: Sour smell due to heat buildup and fermentation, yellow needles, seedlings are warm to the touch, bark slips off easily - especially on the roots, cambium layer is yellow to brown, mold on seedlings.

Planting Southern Pines in Florida



Florida landowners have contributed vastly to the Southeast's planting of pines over many decades. Understanding the factors that affect pine seedling quality and survival will assure a more successful forest plantation, whether objectives focus on timber production, recreation, wildlife habitat, water quality protection, etc.

Seven pine species (*Pinus* spp.) are considered to be native to Florida. These species are loblolly pine (*P. taeda*), longleaf pine (*P. palustris*), shortleaf pine (*P. echinata*), slash pine (*P. elliottii*), sand pine (*P. clausa*), spruce pine (*P. glabra*), and pond pine (*P. serotina*), and each varies in the site conditions where it grows as well as in its commercial utility and availability.

The publication below discusses the importance of site selection and soils as they relate to each species, the landowners' objectives, and their target markets. This publication is a guide to facilitate selection of appropriate pine species and offers guidance on best practices for handling seedlings throughout all stages of tree planting.

Planting Southern Pines in Florida:

<https://edis.ifas.ufl.edu/FR456>



Longleaf Pine



Longleaf pine is a great choice for landowners interested in using prescribed fire to manage forests to accommodate multiple benefits such as wildlife habitat and timber. It's also a great choice for pine straw production on upland sites.

Longleaf Pine Regeneration:

<https://edis.ifas.ufl.edu/fr064>

Genetically Improved Pine Stock

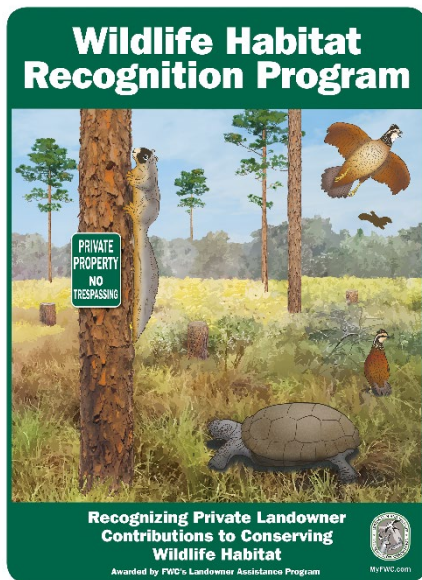
Landowners have many options in regenerating forest stands with genetically improved pine stock. Learn about genetically improved pines and see if they might be a good fit for your site and objectives.

Genetically Improved Pines for Reforesting Florida's Timberlands:

<https://edis.ifas.ufl.edu/fr007>



Assistance and Recognition Programs for Landowners



Private lands play a critically important role in the fate of Florida's vast wildlife resources. The efforts of private landowners to manage their land to benefit wildlife by providing food, water, shelter, and space will help ensure that future generations have the opportunity to experience and enjoy wildlife as much as, or even more than, we do today. To show appreciation for the accomplishments by landowners to conserve our state's wildlife, FWC's Landowner Assistance Program (LAP) created the **Wildlife Habitat Recognition Program**. This program honors landowners who have satisfactorily completed habitat management practices that benefit wildlife and/or their habitat by awarding them with a sign to display on their property and a certificate recognizing their habitat restoration efforts. For more information, please contact your region's FWC LAP Coordinator on the contact page.



The **Forest Stewardship Program**, developed by state forestry agencies, like the Florida Forest Service, provides educational and technical assistance for private landowners. Forestry and natural resource professionals cooperate to help private forest landowners develop and implement a plan designed to increase the economic value of their forestland while maintaining its wildlife habitat value and environmental integrity for future generations. Landowners who demonstrate good forest stewardship are recognized with a Stewardship Forest sign. For more information, please contact your Florida Forest Service county forester, consultant, or FWC LAP biologist. See the contact page.



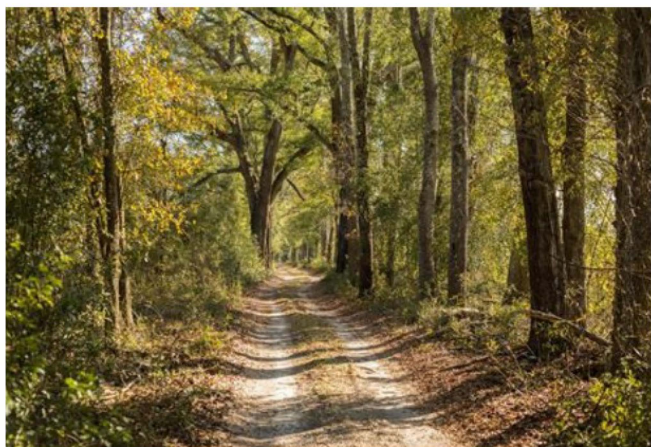
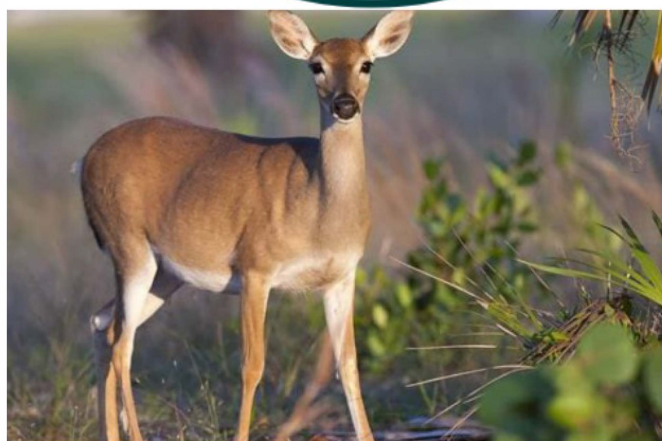
The **American Tree Farm System (ATFS)** Standards of Sustainability guide and ensure that forest benefits are enhanced and available for future generations. Landowners can enroll and be certified in the ATFS to improve access to sustainable forest product markets and educational opportunities. The Florida Tree Farm Program is a nonprofit organization and state affiliate of the ATFS that promotes sustainable forest management and educational outreach to private forest landowners. For more information, please contact your Florida Forest Service county forester, consultant, or FWC LAP biologist. See the contact page.



WOMEN LEARNING TOGETHER WOMEN SUPPORT EACH OTHER

Our goal is to provide opportunities for collaboration and education for all generations of women landowners in Florida. We share land stewardship resources through in-person events and virtual networking related to land ownership including farms, ranches, forests, recreation, and wildlife.

Whether you have 1 acre or 1,000 –
we are here for you!



LANDOWNER INITIATIVES

- Conservation
- Agriculture
- Forestry
- Wildlife
- Water Quality
- Financial Sustainability
- Alternative income streams
- Legacy

Don't wait, this property won't last long!

Follow us on Facebook



SCAN ME

CONTACTS

ALLISON NASH -- [FWLA.CONTACT@GMAIL.COM](mailto:Fwla.Contact@gmail.com)
GINGER FEAGLE -- GINGER.FEAGLE@MYFWC.COM



Florida Forest Service

Silviculture Best Management Practices



SILVICULTURE BEST MANAGEMENT PRACTICES (BMPs)

Silviculture BMPs are the minimum standards necessary to protect our state's waterbodies and wetlands from the degradation and sedimentation that can sometimes occur because of erosion during and immediately following recent forestry operations. Silviculture BMPs should be applied on all bonafide ongoing forestry operations, especially those adjacent to waterbodies and wetlands, and may be enforced by federal, state, and local authorities through reference of regulatory statute or rule.

SILVICULTURE BMP COURTESY CHECKS

Silviculture BMP courtesy checks are available to give landowners, land managers, and loggers a "report card" on Silviculture BMP implementation for recent or ongoing forestry operations. This helps with future management planning as well as evaluating the performance of contractors on your property.

SILVICULTURE BMP SITE ASSESSMENTS

On-the-ground Silviculture BMP site assessments are available to discuss which Silviculture BMPs will apply to planned operations on a specific site. This helps with harvest plan development, road layout, mitigation of existing problem areas, etc.

SILVICULTURE BMP NOTICE OF INTENT

The Silviculture BMP Notice of Intent (Rule 5I-6 F.A.C.) is a one-time pledge that a landowner signs to indicate his or her intention to follow Silviculture BMPs on their property. Once a landowner has signed the Notice of Intent, he or she will become eligible to receive a *presumption of compliance* with state water quality standards during future bonafide ongoing forestry operations. This is very important if the landowner's property falls within an area covered by a Florida Department of Environmental Protection's Basin Management Action Plan for impaired waters.

ADDITIONAL SERVICES

For information on the services listed above or any other services provided by the Florida Forest Service's Hydrology Section please visit www.fdacs.gov/bmps or contact:

Robin Holland
BMP Program Manager
Florida Forest Service
(352) 732-1781
Robin.Holland@FDACS.gov



Florida Department of Agriculture and Consumer Services



Forestry Wildlife Best Management Practices for State Imperiled Species



- Forestry Wildlife Best Management Practices for State Imperiled Species (WBMPs) were adopted into Florida Administrative Code (Rule 5I-8) on October 21, 2014.
- WBMPs were developed through a partnership between the Florida Department of Agriculture and Consumer Services' Florida Forest Service and the Florida Fish and Wildlife Conservation Commission (FWC).
- WBMPs are **voluntary** practices designed as a practical approach for avoiding and minimizing the loss of **State Imperiled Species** due to silviculture operations.
- WBMP practices address the 16 State Imperiled Species which are considered to be potentially vulnerable to silviculture operations including ten aquatic species, two burrowing animals, and four nesting birds.
- WBMPs are designed to supplement the existing water quality-based Silviculture BMPs which already provide many valuable benefits to the conservation and management of fish and wildlife in Florida.
- Landowners and other forestry resource professionals can enroll in the voluntary program by completing a WBMP Notice of Intent. Those who do not wish to enroll will continue to be subject to all current laws and regulations regarding State Imperiled Species.
- Once enrolled, applicants who **properly implement** WBMPs will no longer be required to obtain a permit authorizing the incidental take of State Imperiled Species during bonafide ongoing forestry operations. In addition, they will not be subject to any fines or penalties associated with an incidental take of the State Imperiled Species covered by the WBMP Manual.
- WBMPs are not designed to facilitate wildlife habitat restoration or species recovery and expansion. Also, they do not address any Federally Listed Species. For information on Federally Listed Species, refer to FWC's online "Florida Wildlife Conservation Guide."
- For more information or to request a copy of the Forestry WBMP Manual and Notice of Intent contact:

Robin Holland
BMP Program Manager
Florida Forest Service
(352) 732-1781
Robin.Holland@FDACS.gov
www.fdacs.gov/bmps



5

Steps to Assistance

How to Get Assistance from NRCS for Farms, Ranches and Forests

1 PLANNING

Visit your local NRCS field office to discuss your goals and work with staff on a conservation plan.

2 APPLICATION

With the help of NRCS, complete an application for financial assistance programs.

3 ELIGIBILITY

Find out if you're eligible for NRCS' variety of financial assistance programs.

4 RANKING

NRCS ranks applications according to local resource concerns.

5 IMPLEMENTING

Put conservation to work by signing a contract and implementing conservation practices.

Get Started with NRCS

Do you farm or ranch and want to make improvements to the land that you own or lease?

Natural Resources Conservation Service offers technical and financial assistance to help farmers, ranchers and forest landowners.

1 Planning

To get started with NRCS, we recommend you stop by your local NRCS field office.

We'll discuss your vision for your land.

NRCS provides landowners with free technical assistance, or advice, for their land. Common technical assistance includes: resource assessment, practice design and resource monitoring. Your conservation planner will help you determine if financial assistance is right for you.

2 Application

We'll walk you through the application process. To get started on applying for

financial assistance, we'll work with you:

- To fill out an AD 1026, which ensures a conservation plan is in place before lands with highly erodible soils are farmed. It also ensures that identified wetland areas are protected.
- To meet other eligibility certifications.

Once complete, we'll work with you on the application, or CPA 1200.

Applications for most programs are accepted on a continuous basis, but they're considered for funding in different ranking periods. Be sure to ask your local NRCS district conservationist about the deadline for the ranking period to ensure you turn in your application in time.

3 Eligibility

As part of the application process, we'll check to see if you are eligible.

To do this, you'll need to bring:

- An official tax ID (Social Security number or an employer ID)
- A property deed or lease agreement to show you have control of the property; and
- A farm tract number.

If you don't have a farm tract number, you can get one from USDA's Farm Service Agency. Typically, the local FSA office is located in the same building as the local NRCS office. You only need a farm tract number if you're interested in financial assistance.

4 Ranking

NRCS will take a look at the applications and rank them

according to local resource concerns, the amount of conservation benefits the work will provide and the needs of applicants.

5 Implementing

If you're selected, you can choose whether to sign the contract for the work to be done.

Once you sign the contract, you'll be provided standards and specifications for completing the practice or practices, and then you will have a specified amount of time to implement. Once the work is implemented and inspected, you'll be paid the rate of compensation for the work if it meets NRCS standards and specifications.

USDA is an equal opportunity provider and employer.

To find out more, go to: www.nrcs.usda.gov/GetStarted

FSA DOCUMENTS NEEDED FOR CUSTOMERS APPLYING FOR NRCS PROGRAMS

If you have not worked with the USDA before you will need to make an appointment with the Farm Service Agency (FSA) at your local USDA Service Center. To find your local office, visit www.farmers.gov/working-with-us/service-center-locator.

What to bring with you

Bring the following documentation:

- Proof of your control of the land you wish to enroll by providing a lease or a copy of the deed to the property.
- Parcel ID number from the County Property Appraiser site for locating the farm.
- Provide your Social Security or Employer Identification Number and contact information.
- For entities, partnerships, or joint operations you will need to provide information documenting those individuals with authority to represent the business.

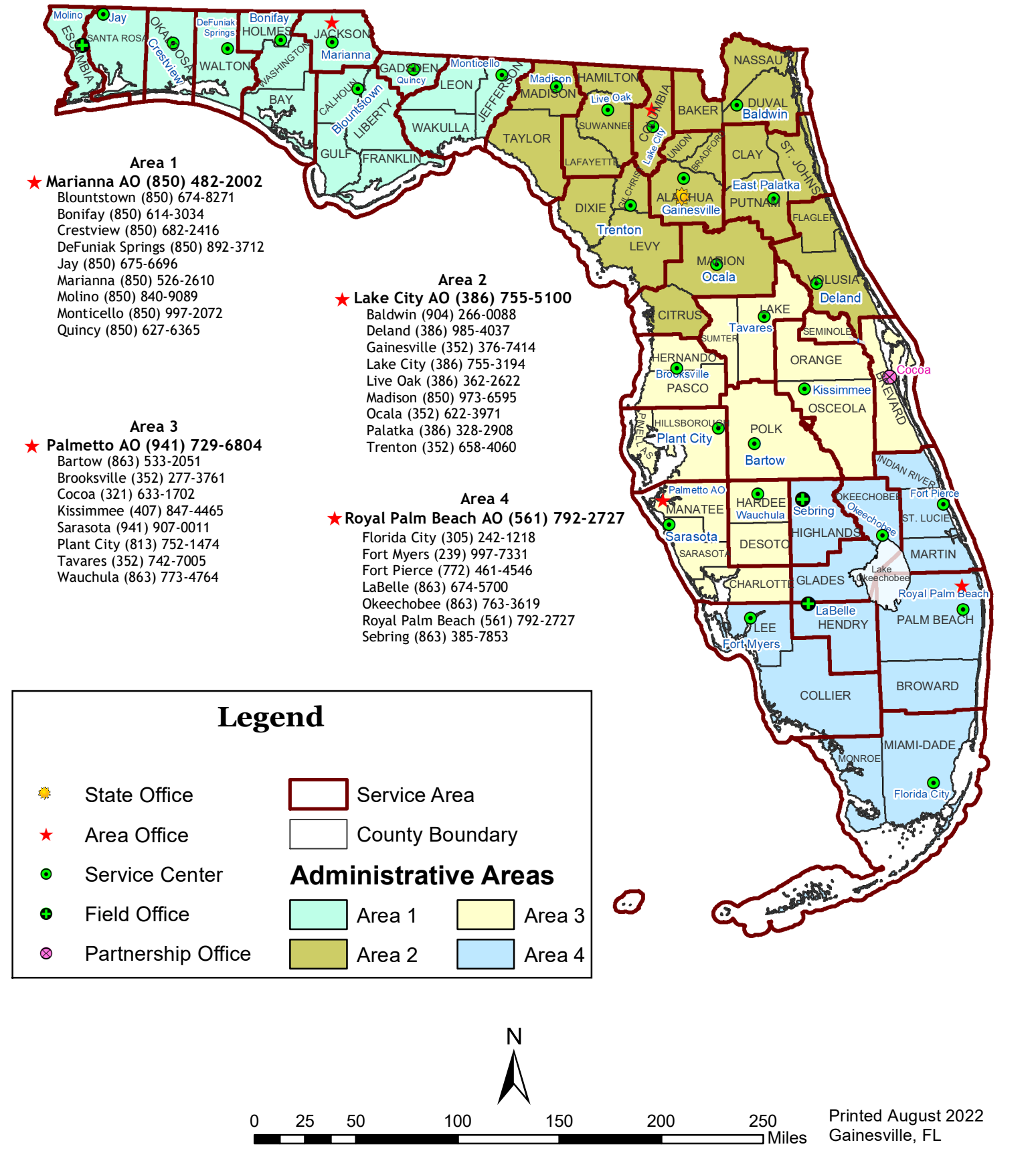
What you will need to complete for the Farm Service Agency

- **AD-2047 For Individuals and Entities – Form is required for all members of the entity.**
- **CCC-941 - Adjusted Gross Income (AGI) – Form is required for entity and all members of the entity.**
- **CCC-901 and CCC- 902 - Members' Information for entities and joint operations.**
- **AD-1026 - Highly Erodible Land Conservation (HELC) and Wetland Conservation (WC) Certification – Form is required for all individuals, LLC and all its members, corporations and all its members with more than 20% shares.**

It takes time for the paperwork to be processed and additional information may be needed. Please start this process early in order to insure you are eligible prior to any program sign-up cut-off dates. If you apply for a USDA program and the system does not show you or your entity as eligible, your application will not be processed or funded.

USDA-NRCS ADMINISTRATIVE AREAS & LOCAL OFFICES

FLORIDA



UF/IFAS Stewardship Publications



- [Planting Southern Pines in Florida](#)
- [Benefits of Prescribed Fire](#)
- [Assessment and Management of Hurricane Damaged Timberland](#)
- [Florida's Forest Stewardship Program: An Opportunity to Manage Your Land for Now and the Future](#)
- [Forest Resource Information on the Internet: Connecting to Today's Online Resources](#)
- [Genetically Improved Pines for Reforesting Florida's Timberlands](#)
- [Improving, Restoring, and Managing Natural Resources on Rural Properties in Florida: Sources of Financial Assistance](#)
- [Improving, Restoring, and Managing Wildlife Habitat in Florida: Sources of Technical Assistance for Rural Landowners](#)
- [Longleaf Pine Regeneration](#)
- [Marking First Thinnings in Pine Plantations: Potential for Increased Economic Returns](#)
- [Opportunities for Uneven-Aged Management in Second Growth Longleaf Pine Stands in Florida](#)
- [The Optimal Forest Management of an Even-Aged Stand: The Biological Rotation versus the Land Expectation Value](#)
- [Ownership Succession: Plan Now for the Future of Your Land](#)
- [Prepare Your Forest Property for Hurricane Season](#)
- [Selecting a Consulting Forester](#)
- [Steps to Marketing Timber](#)
- [Stewardship Ecosystem Services Study Series: Assessing Forest Water Yield and Regulation Ecosystem Services in the Lower Suwannee River Watershed, Florida](#)
- [Thinning Southern Pines—A Key to Greater Returns](#)
- [What if prescribed fire is not an option? An overview of alternative vegetation and fuel management treatments](#)
- [What Is in a Natural Resource Management Plan?](#)
- [What to Expect in a Forest Inventory](#)

See <https://edis.ifas.ufl.edu/> to access these and many more UF/IFAS Extension publications.





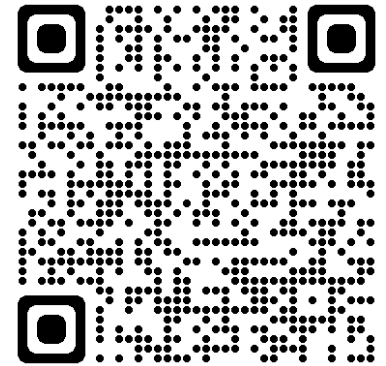
Forest Landowner Academy

Enroll Now!

Are you new to forestry and land management? Need a good primer on forest management concepts and next steps? This course is for you! The **Forest Landowner Academy** connects you with forest management experts at the University of Florida and delivers quality core educational content on forestry and multiple-use stewardship concepts.

The seven course modules include field and virtual classroom presentations on **understanding your forest resources, developing your management plan, timber management, marketing forest products, other forest enterprises such as pine straw and hunting leases, wildlife management, and planning for the future**. Each module includes an assessment where you can apply what you've learned to your land or situation and begin or continue planning and making contacts. The cost of the course is \$150. Those completing the course will earn a University of Florida Certificate.

This course is relevant for Florida landowners as well as those in the coastal plain regions of neighboring states. Landowners can build on this course as they receive information and attend educational events offered by the Florida Land Steward Program and other partners in Florida and neighboring states.



Use promotion code

K1UZ17

for 30% off

(valid through 2024)

UF/IFAS School of Forest, Fisheries, and Geomatics Sciences

For more information, contact:

Chris Demers at cdemers@ufl.edu, 352.846.2375 or

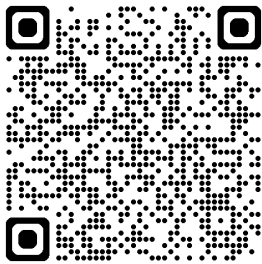
Dr. Michael Andreu, mandreu@ufl.edu

<https://ifas-sfrc-for.catalog.instructure.com/courses/for-fla/>

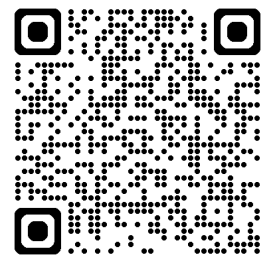
[illegible]



Thanks for joining us!



<https://programs.ifas.ufl.edu/florida-land-steward/>



[https://www.fdacs.gov/Divisions-Offices/
Florida-Forest-Service](https://www.fdacs.gov/Divisions-Offices/Florida-Forest-Service)