

An aerial photograph of a vast, dense evergreen forest, likely a spruce or fir forest, covering a hillside. The trees are tightly packed, creating a rich green texture. The lighting suggests a bright day, with some areas of the forest appearing slightly brighter than others.

LANDYIELD

Connecting Family Forests to Carbon Revenue

How the program works

Owners commit to a 40-year project - 20 years of no commercial harvesting – 20 years of limited harvesting or continued carbon payments

Regular payments begin shortly after enrolment – **guaranteed for 1st 3 years of project**

Landowner pays **no project development, inventory, measurement, reporting & verification, or administrative costs.**

Timber resources

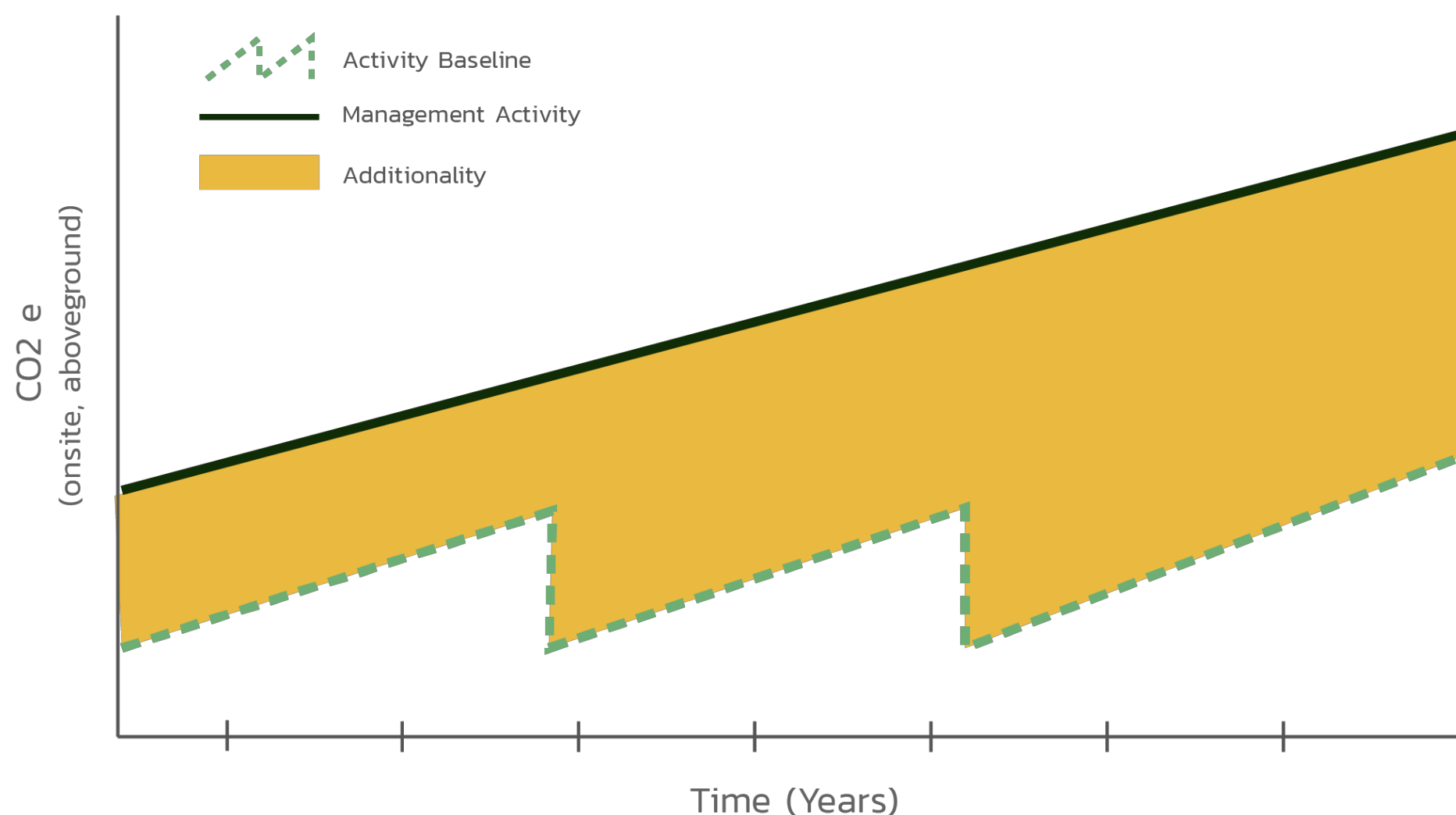


Non-timber resources

- Recreational Uses
- Hunting Leases
- Non-timber forest products
- Water quality protection
- Revenue for property tax payments

What we do

DEFERRED HARVEST



Creating high-integrity carbon offsets

LandYield uses vetted and audited processes from ACR to create offsets on the voluntary market. This market uses unregulated, private finance to pay landowners for conservation.

Using data from the US Forest Service and remote sensing technology, the amount of carbon stored by your forestland is quantified and compared to “business as usual”.

Most merchantable species reach their prime growth rate years (CMAI) after typical harvest rotations. This program incentivizes allowing forests to mature and capture their most efficient growth years.

Built-in flexibility

Giving private family forest owners options for the future



- ✓ Landowners can enroll the stands that meet their long-term management needs
- ✓ Forest health treatments allowed with Forester supervision
- ✓ Landowners may cut up to 5 cords of wood for personal use
- ✓ Landowners may clear small areas for food plots and cabin sites
- ✓ Carbon project can be transferred to new landowners
- ✓ Forest certification is an option but not a requirement



Methodology designed for private family landowners

STREAMLINED INVENTORY, REMOTE MONITORING, REPORTING & VERIFICATION

The Small Non-Industrial Private Forest Landowner (SNIPFL) methodology reduces costs using innovative remote sensing technology.

The American Carbon Registry (ACR) is a nonprofit founded in 1996 as the first private voluntary greenhouse gas registry in the world. The ACR Standard details requirements and specifications for the quantification, monitoring, reporting, verification, registration and issuance of project-based GHG emissions reductions and removals as carbon credits.

KEY BENEFITS

Conservation, Revenue and Legacy

INCREASE CASH YIELD

LandYield allows landowners to generate income by deferring harvests and sequestering additional carbon.

Landowners can continue to earn income from non-timber sources such as leasing hunting rights and collecting non-timber forest products while enrolled in the program.

PROPERTY VALUES GROW

Generating revenue or preserving forests no longer needs to be a choice.

While realizing carbon revenue during the deferral period, landowners continue to enjoy what they love about their land as its value grows.

CUSTOMIZABLE AND FLEXIBLE

LandYield gives landowners the ability to enroll only the portions of land they choose.

Carbon projects can be transferred to new landowners if required.



The difference

- 1 Real outcomes**

Landowners make a long-term commitment to defer harvests, conserving forests and increasing carbon stocks.
- 2 Landowners get paid more, more often**

LandYield pays landowners quarterly throughout the 20-year crediting period, with better rates than competitors and more predictable revenue.
- 3 Registry certified credits**

Carbon credits from harvest deferrals produce independently verified, high-integrity offsets. These registry certified credits are sought after and purchased by Fortune 500 companies
- 4 Turn-key project development**

LandYield manages all project development, and monitoring processes for the project duration. Landowners simply sign up, defer harvests, and provide periodic input to changes to their enrolled land.



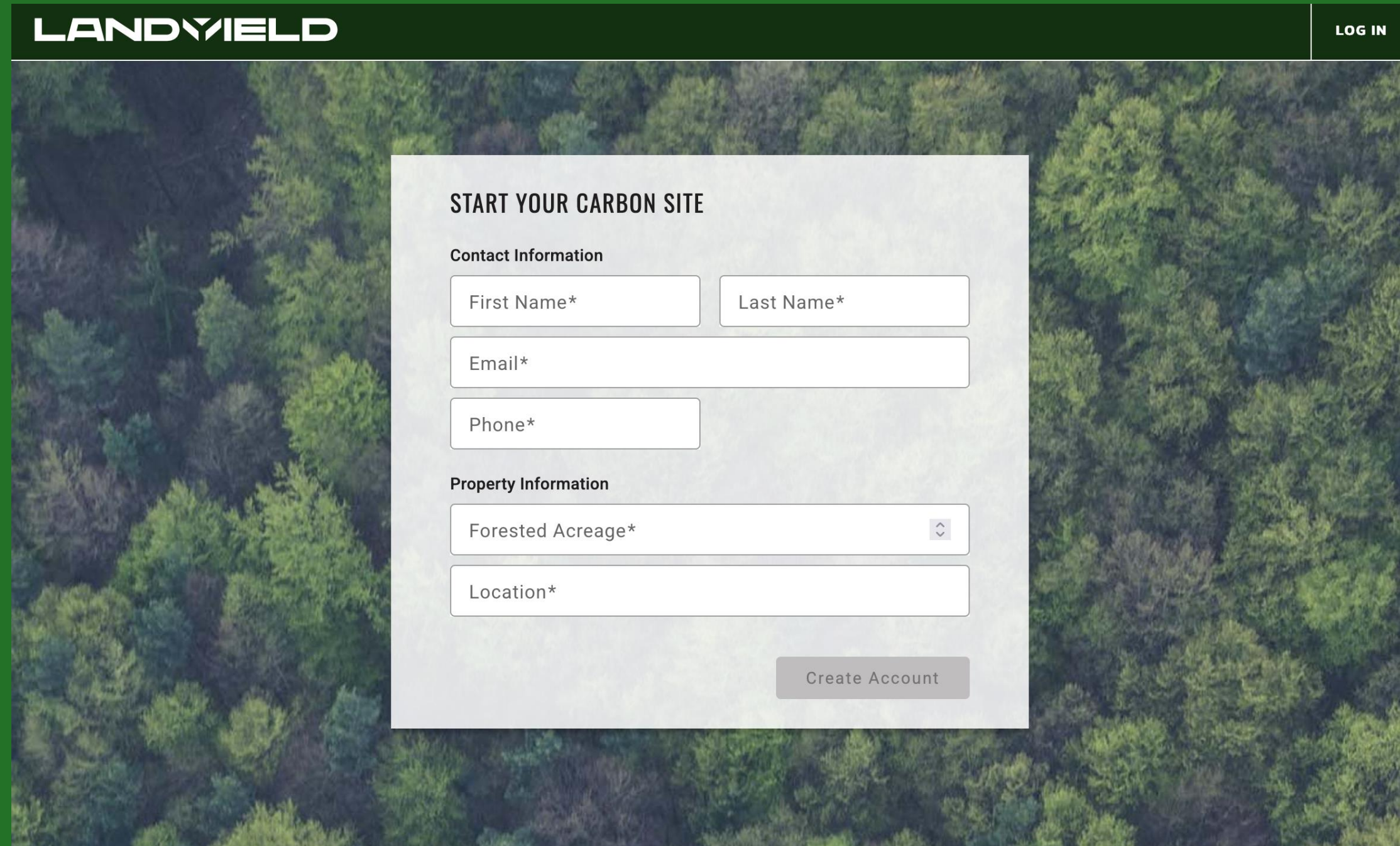
Getting started is easy

1) Go to landyield.com to get more information and free estimate

2) Click "Get Started" to create account.

- Verify ID
- Identify tax parcel
- Upload deeds/tax bills

3) Start getting paid



The screenshot shows the LANDYIELD website's registration page. At the top, the LANDYIELD logo is on the left, and a 'LOG IN' link is on the right. The main content area features a large background image of a dense forest. Overlaid on this is a white registration form titled 'START YOUR CARBON SITE'. The form is divided into two sections: 'Contact Information' and 'Property Information'. The 'Contact Information' section includes fields for 'First Name*', 'Last Name*', 'Email*', and 'Phone*'. The 'Property Information' section includes a dropdown menu for 'Forested Acreage*' and a text field for 'Location*'. A 'Create Account' button is located at the bottom right of the form.

LANDYIELD

LOG IN

START YOUR CARBON SITE

Contact Information

First Name* Last Name*

Email*

Phone*

Property Information

Forested Acreage*

Location*

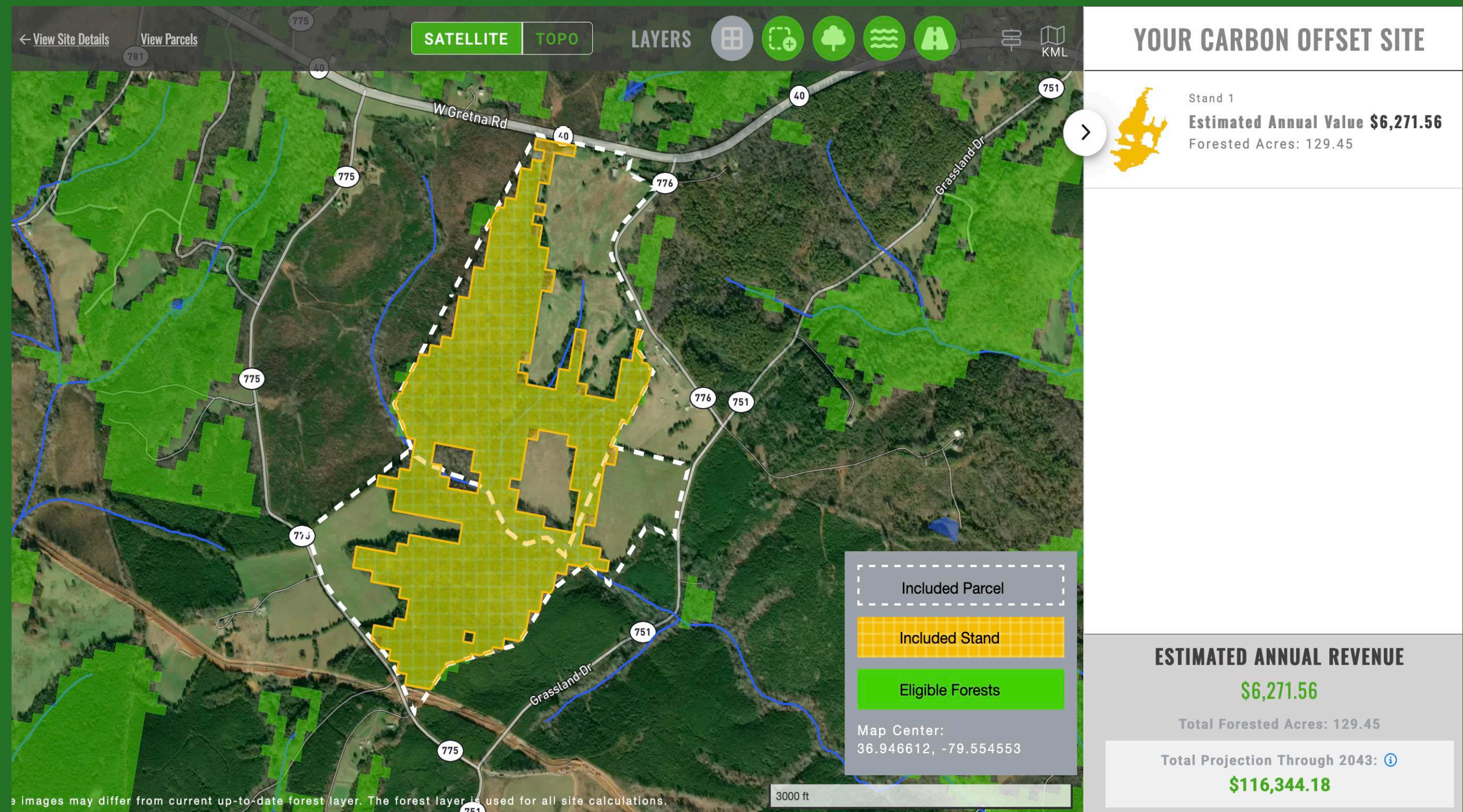
Create Account

Example Project

LandYield
analyzes your
property

Eligible
Forested Acres

\$ Revenue
Estimate



What makes a good fit for a project?



- ✓ Long rotation forests such as hardwoods, mixed forests, and certain pine management regimes
- ✓ Areas of high conservation value such as rare habitats
- ✓ Areas of sensitive aesthetics
- ✓ Riparian zones – water quality concerns
- ✓ Areas where timber harvesting is secondary in importance to other management objectives
- ✓ Must have merchantable timber

Enrolling a project is easy

Step 1

EVALUATE PROGRAM

Review LandYield website and work with foresters to understand program benefits and requirements

Step 4

APPROVAL

Submit project and supporting documents for review.

Step 2

REVIEW ECONOMICS

Landowners and foresters use LandYield platform to find property and select whole stands or create custom project.

Step 5

CONTRACTS

LandYield delivers landowner agreement for review and execution.

Step 3

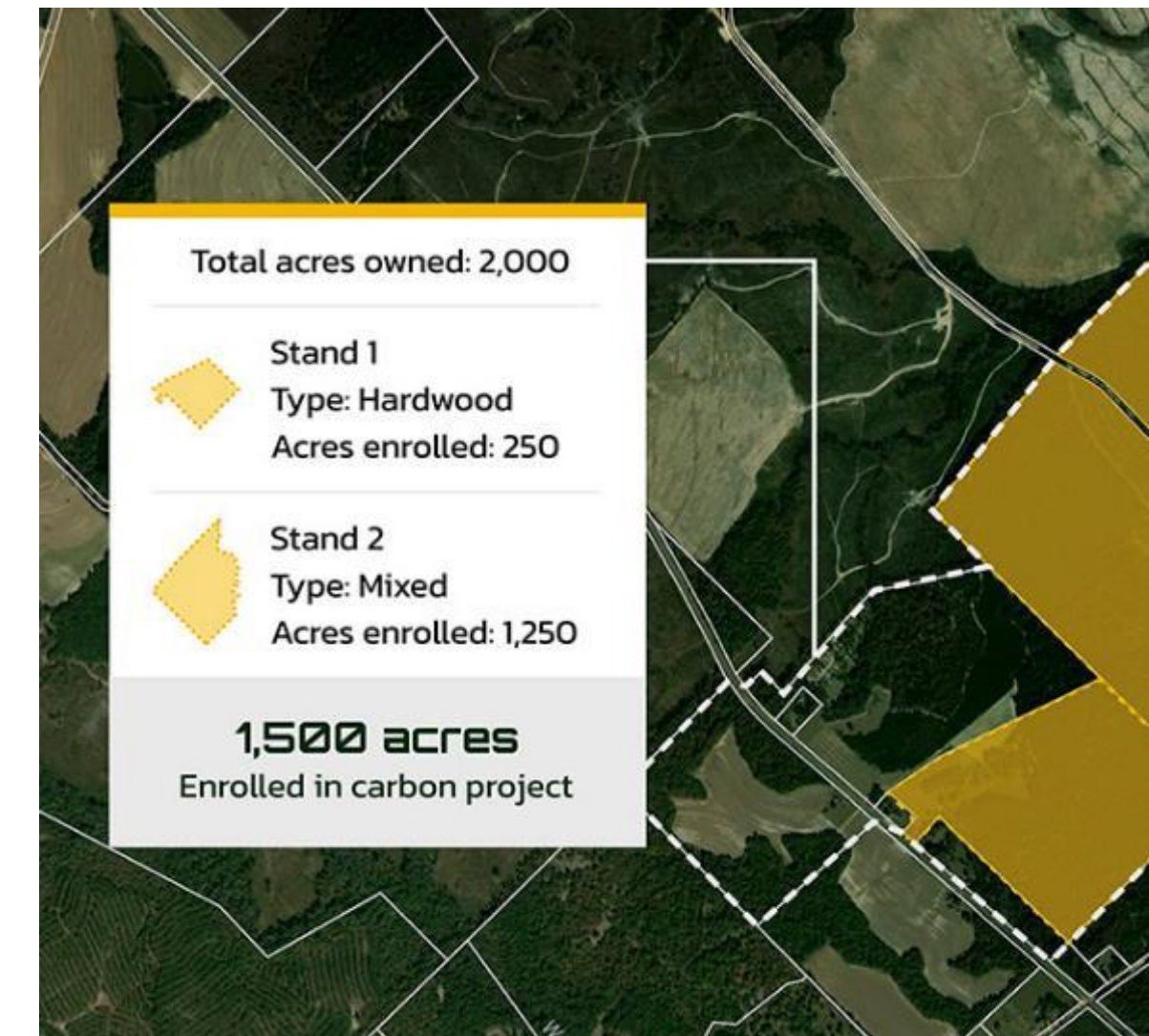
NO-COST INSTANT QUOTE

Confirm eligibility and obtain a quote for forests included in your project.

Step 6

RECEIVE PAYMENT

Enrolled projects generate revenue soon after enrollment; online reports and attestations submitted quarterly.



An aerial photograph of a dense evergreen forest, likely a spruce or fir forest, with sunlight filtering through the canopy, creating a dappled light effect. The trees are a vibrant green color.

LANDYIELD

Please contact us with any questions

website: www.landyield.com

email: info@landyield.com

phone: 423-667-3625